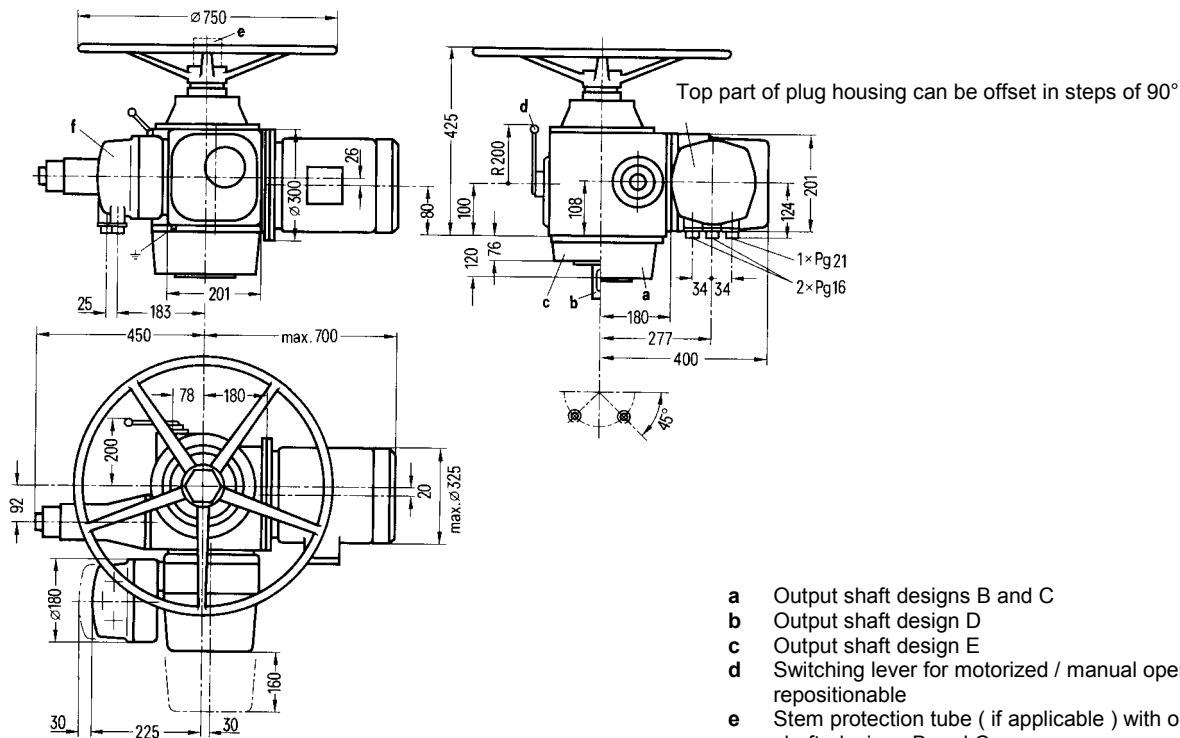


Dimensional drawing **M76361-M, M76371-M**, size 3 acc. DIN 3210

### Rotary actuator M76361 – M, S – SIWI series



- a Output shaft designs B and C
- b Output shaft design D
- c Output shaft design E
- d Switching lever for motorized / manual operation, repositionable
- e Stem protection tube ( if applicable ) with output shaft designs B and C
- f Plug with cable inlets via metal screwed glands to DIN 46 320
- g Plug with qualified cable inlets

### Rotary actuator M76371 – M, S – SIWI – AS series

