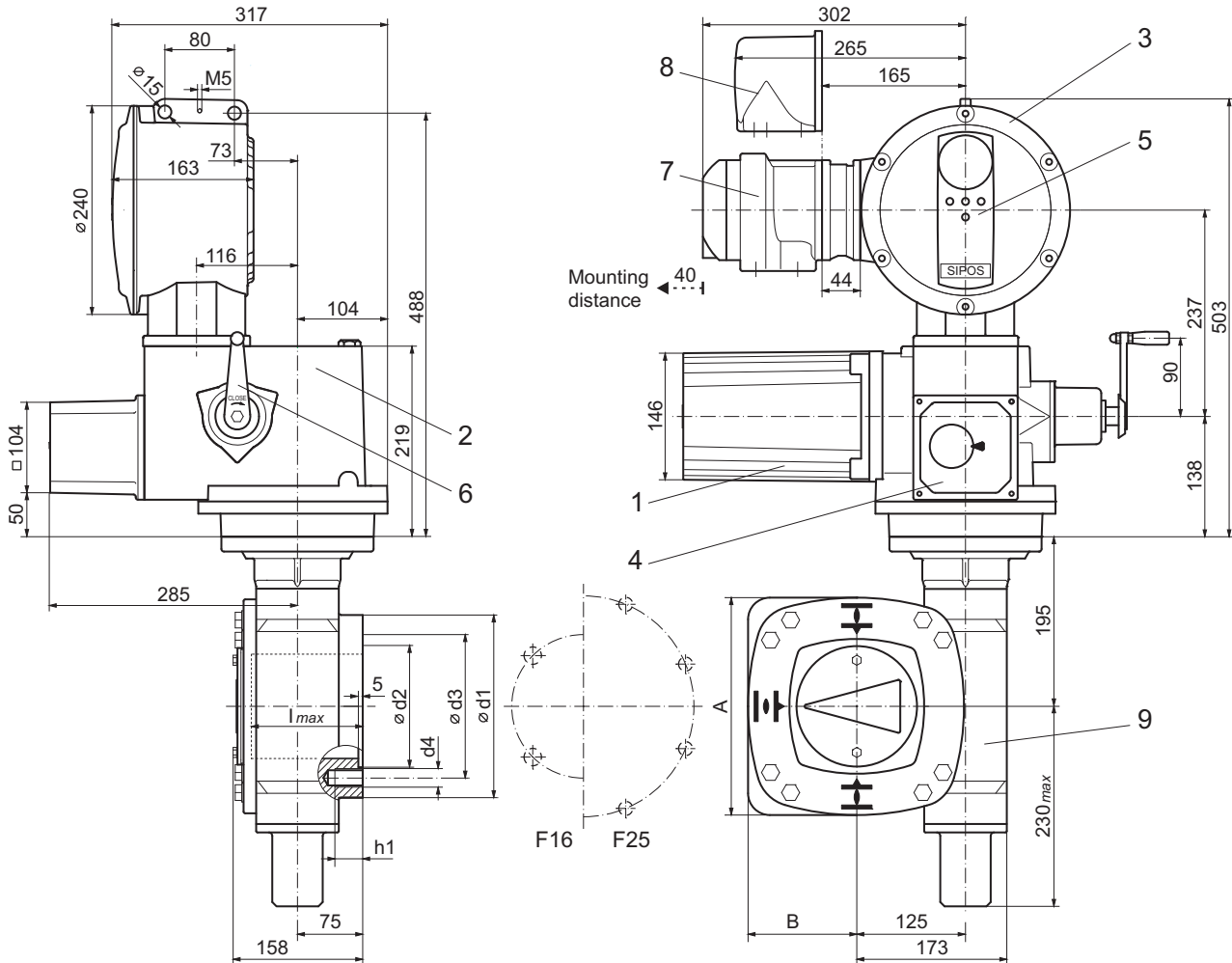
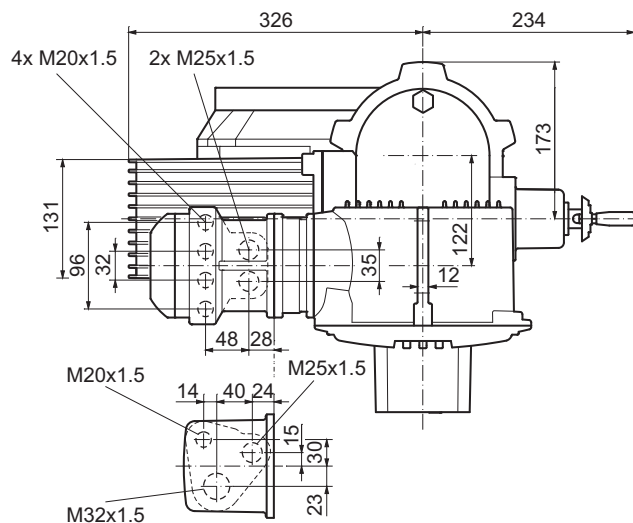


Dimensional drawing **2SC5064, 2SC5065**
2SC5544, 2SC5545

R866710 II



Dimensions	2SC506.	2SC554.
ISO 5211	F16	F25
A	250	300
B	125	150
$\varnothing d1$	210	300
$\varnothing d2$	140	225
$\varnothing d3$	165	254
$d4$	M20	M16
$h1$	32	25
l_{max}	128	128



- 1 Motor
- 2 Basic gear
- 3 Electronics unit with converter

- 4 Signaling gear
- 5 Local control station
- 6 Hand crank

- 7 Field bus connection / Connection for galvanically separated analog signals
- 8 Direct- / Plug connection
- 9 Part-turn unit