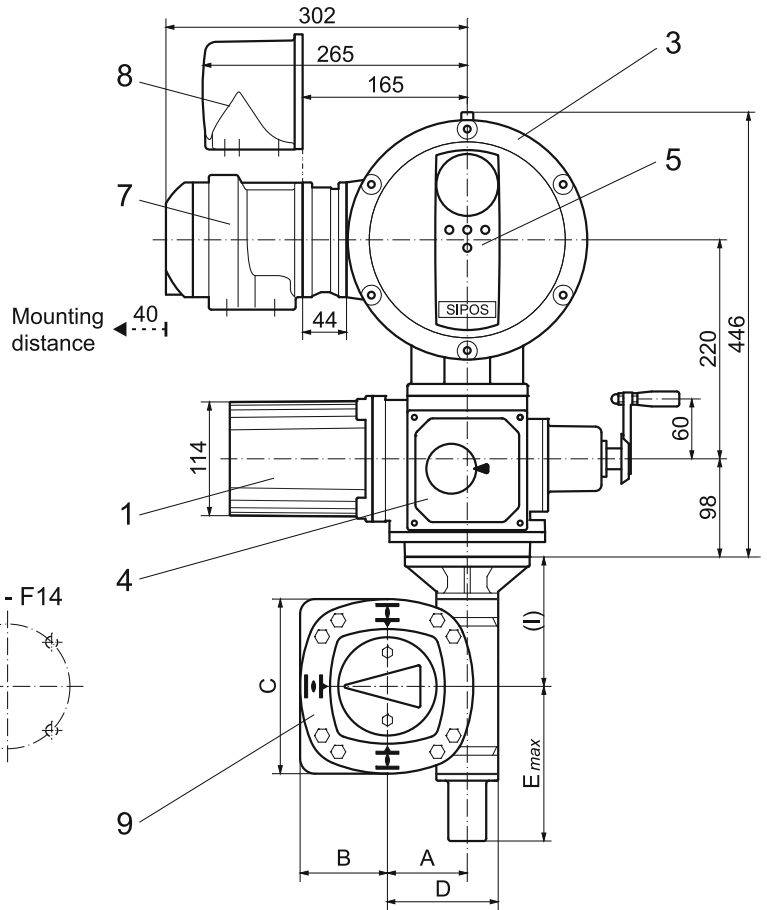
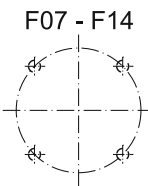
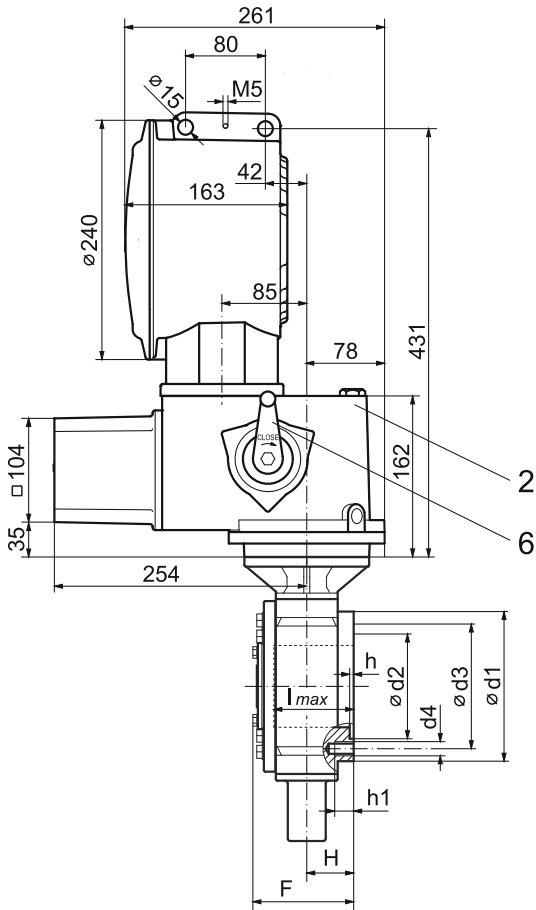
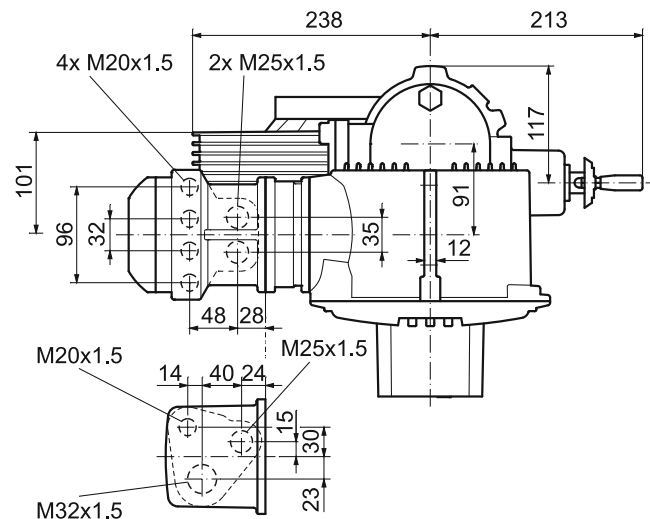


Dimensional drawing **2SC5010, 2SC5011, 2SC5032, 2SC5042, 2SC5043**
2SC5510, 2SC5511, 2SC5512, 2SC5522, 2SC5523

R866709



Dimensions	2SC501.		2SC503. 2SC551.			2SC504. 2SC552.	
	F07	F10	F07	F10	F12	F12	F14
ISO 5211	F07	F10	F07	F10	F12	F12	F14
A	50	50	63	63	63	80	80
B	60	63	75	75	75	88	88
C	108	125	150	150	150	175	175
D	77	77	94	94	94	111	111
E _{max}	114	114	150	150	150	155	155
F	89	89	115	100	103	108	118
H	40	40	60	42	45	47	57
(I)	100	100	125	125	125	130	130
ϕ d1	90	125	150	125	150	150	175
ϕ d2	60	85	-	85	105	105	115
ϕ d3	70	102	70	102	125	125	140
d4	M8	M10	M8	M10	M12	M12	M16
h	3,5	4	-	4	4	4	5
h1	13	16	12	16	19	19	25
I _{max}	63	63	93	75	78	80	90



- 1 Motor
- 2 Basic gear
- 3 Electronics unit with converter

- 4 Signaling gear
- 5 Local control station
- 6 Hand crank

- 7 Field bus connection / Connection for galvanically separated analog signals
- 8 Direct-/ Plug connection
- 9 Part-turn unit