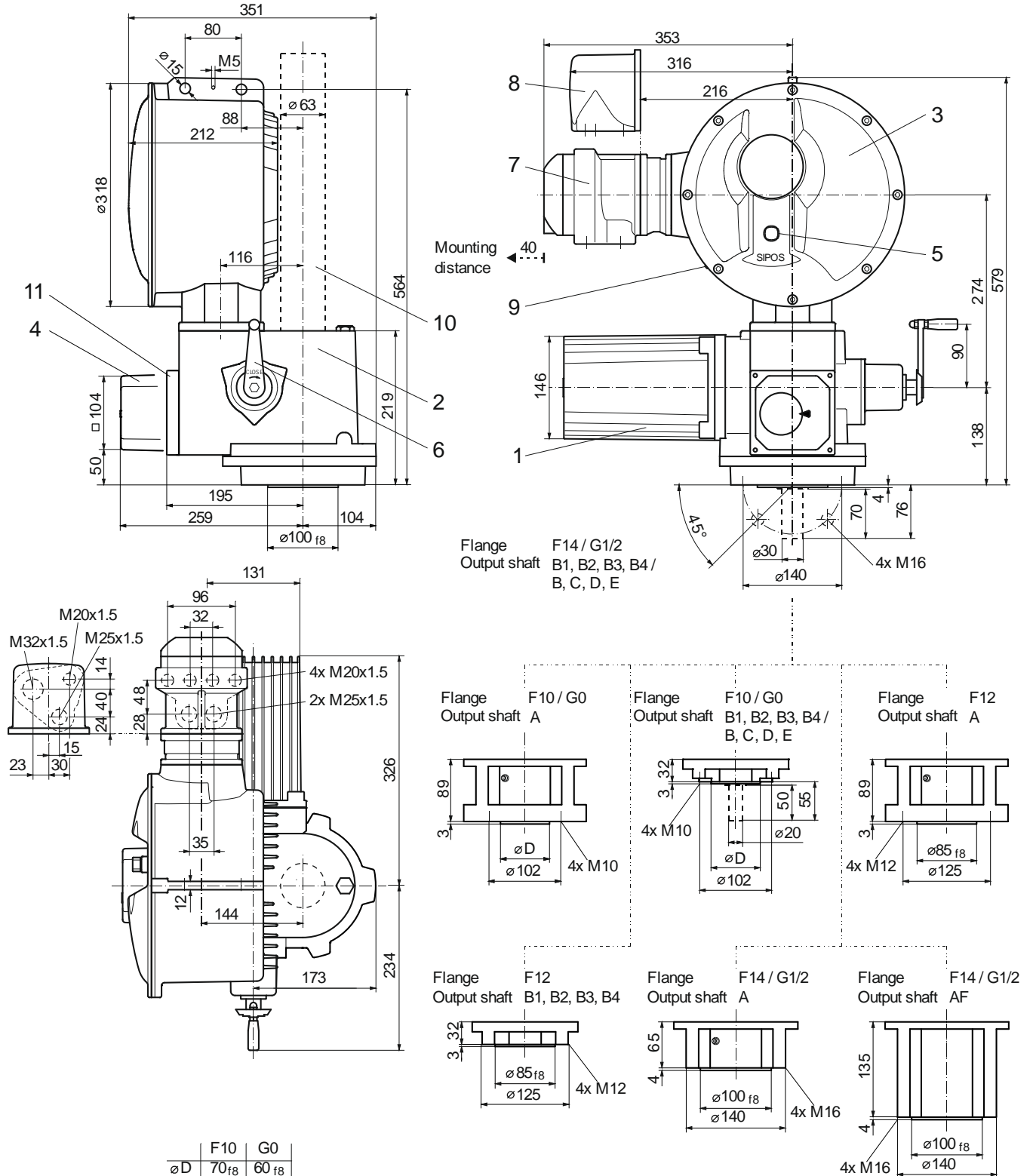


Dimensional drawing **2SA704.-D, 2SA704.-E, 2SA734.-D, 2SA734.-E, 2SA754.-D**

R866853



- |   |                  |   |                       |    |   |
|---|------------------|---|-----------------------|----|---|
| 1 | Motor            | 4 | Signaling gear        | 8  | Plug connection                                   |
| 2 | Gear unit        | 5 | Local control station | 9  | USB interface (only PROFITRON)                    |
| 3 | Electronics unit | 6 | Hand crank            | 10 | Spindle protection tube (for length, see catalog) |
|   |                  | 7 | Field bus connection  | 11 | non-intrusive position encoder                    |