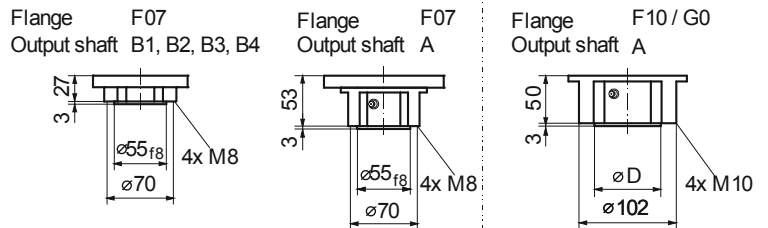
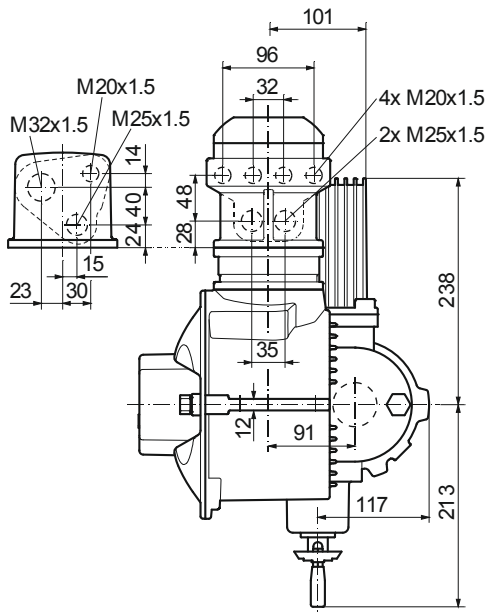
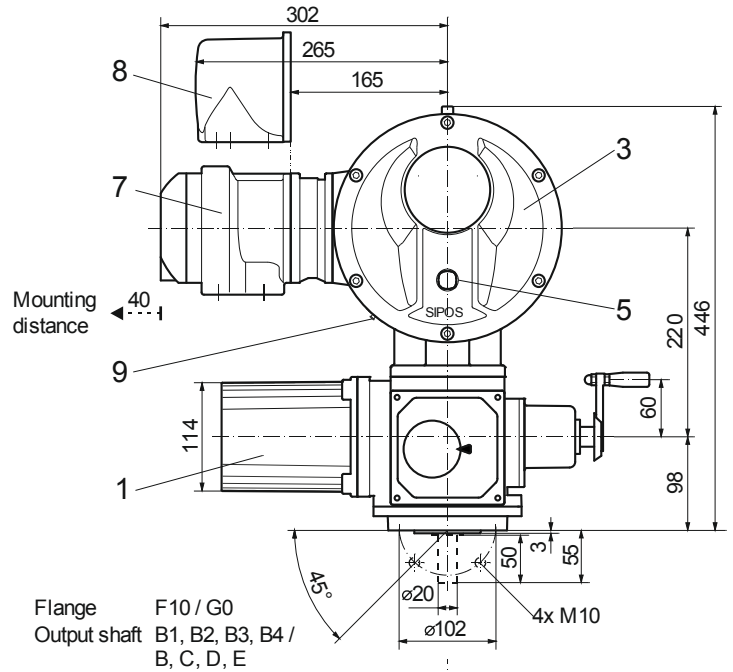
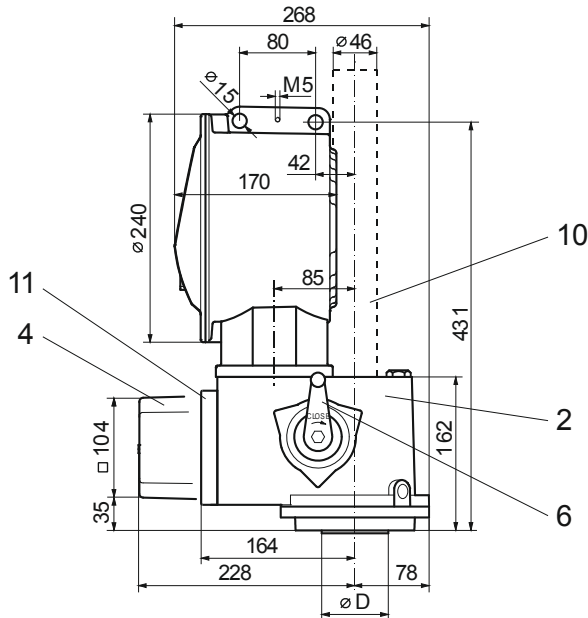
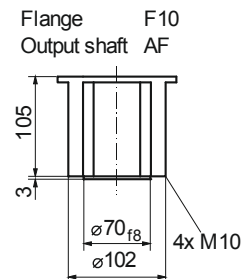


Dimensional drawing **2SA701., 2SA702., 2SA731., 2SA732., 2SA751., 2SA752.**

R866851



	F10	G0
$\phi D$	70 <sub>f8</sub>	60 <sub>f8</sub>



- |                    |                         |  |
|--------------------|-------------------------|--|
| 1 Motor            | 4 Signaling gear        | 8 Plug connection                                    |
| 2 Gear unit        | 5 Local control station | 9 USB interface (only PROFITRON)                     |
| 3 Electronics unit | 6 Hand crank            | 10 Spindle protection tube (for length, see catalog) |
|                    | 7 Field bus connection  | 11 non-intrusive position encoder                    |