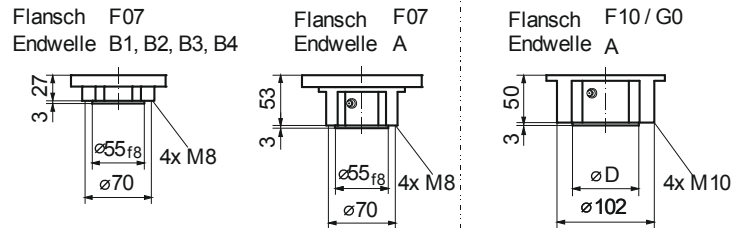
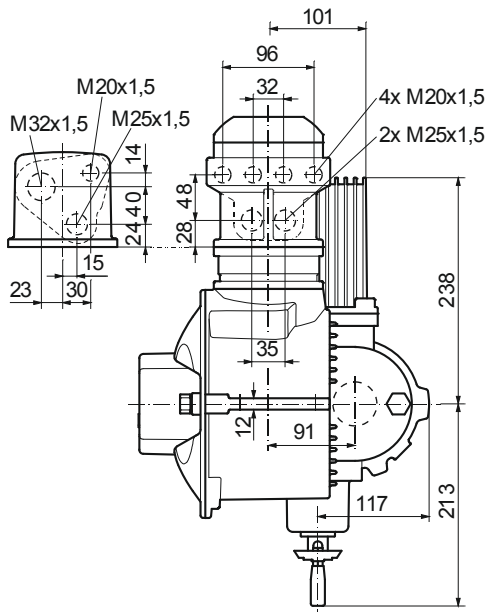
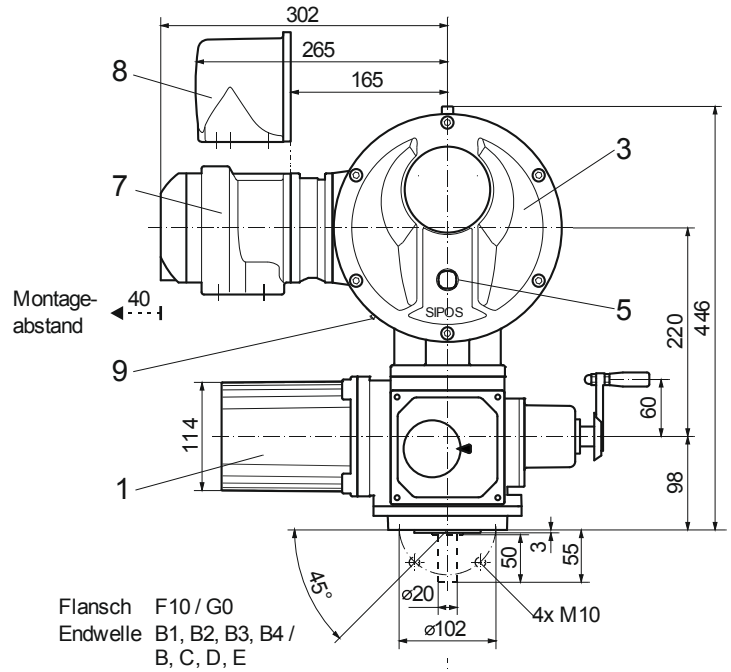
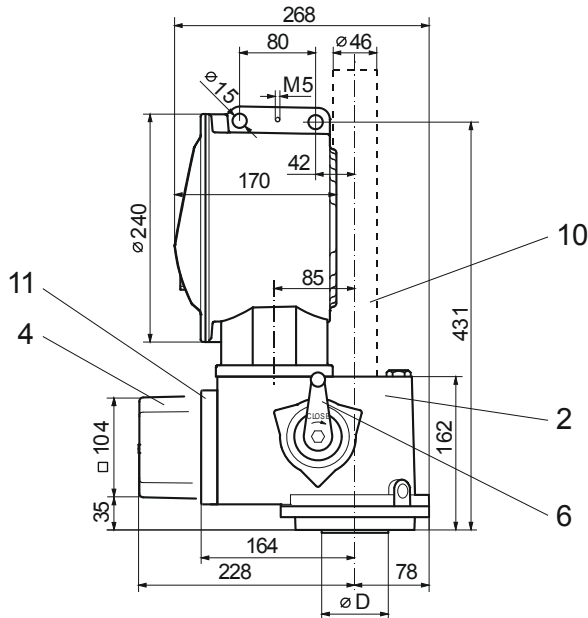
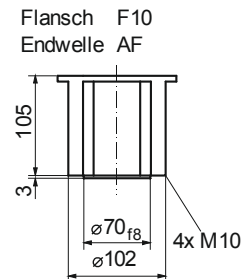


Maßbild **2SA701., 2SA702., 2SA731., 2SA732.,  
2SA751., 2SA752.**

R866851



	F10	G0
$\varnothing D$	70 <sub>f8</sub>	60 <sub>f8</sub>



- |                       |                      |   |
|-----------------------|----------------------|---|
| 1 Motor               | 4 Meldegetriebe      | 8 Steckeranschluss                        |
| 2 Getriebeeinheit     | 5 Vorortsteuerstelle | 9 USB-Schnittstelle (nur PROFITRON)       |
| 3 Elektronikeneinheit | 6 Handkurbel         | 10 Spindelschutzrohr (Länge nach Katalog) |
|                       | 7 Feldbus-Anschluss  | 11 non-intrusive Positionsgeber           |