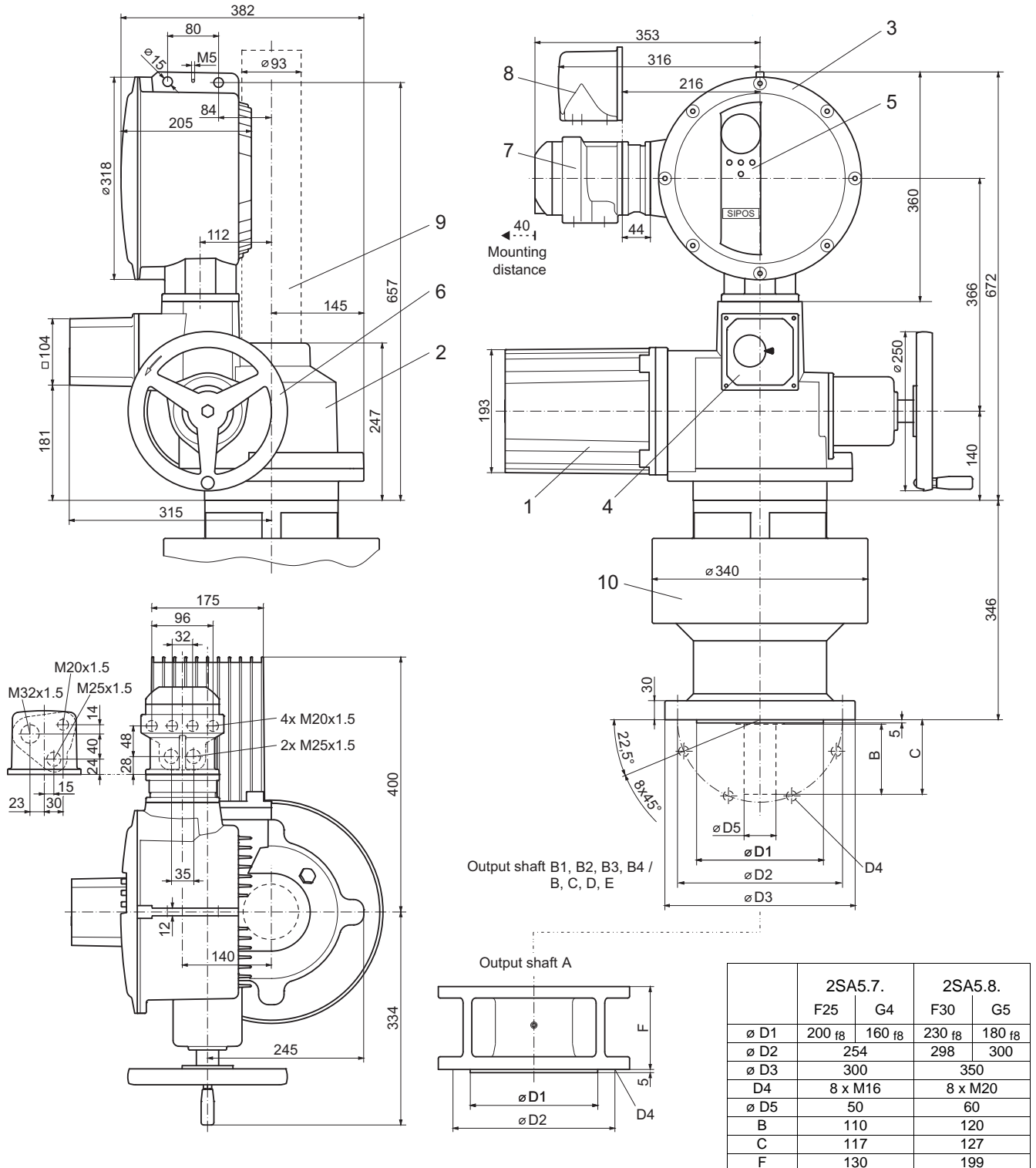


Dimensional drawing **2SA507., 2SA508.**
2SA557., 2SA558.

R866705



- | | | |
|-----------------------------------|---|---|
| 1 Motor | 5 Local control station | 8 Direct-/ Plug connection |
| 2 Basic gear | 6 Hand wheel | 9 Spindle protection tube (for length, see catalog) |
| 3 Electronics unit with converter | 7 Field bus connection / Connection for galvanically separated analog signals | 10 Intermediate gear (supplied separately) |
| 4 Signaling gear | | |