

Program “Product selection”

Operation and functional description



Order No. Y070.265

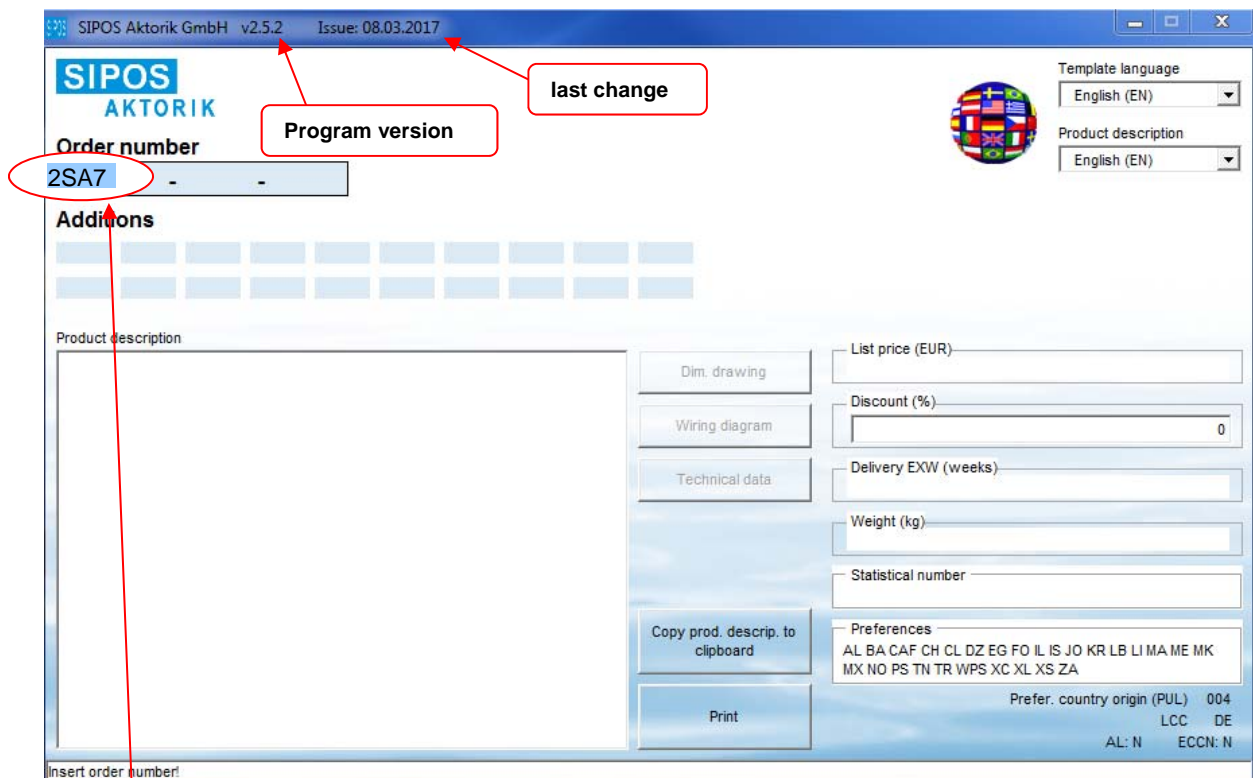
Contents	Page
1. What can you do with the program „Product selection“?	2
2. Start template	2
3. Selection	2
4. Documentation, e.g. dimensional drawing	3
5. Commercial data, delivery time and weight	4
6. Language selection	4
7. Processing of obtained data	4-5
8. List and customer price	5
9. Installation and program start	5-6

1. What can you do with the program „Product selection“?

The installation USB stick “Product selection” contains all products of the SIPOS Aktorik, including special versions, spare parts and accessories.

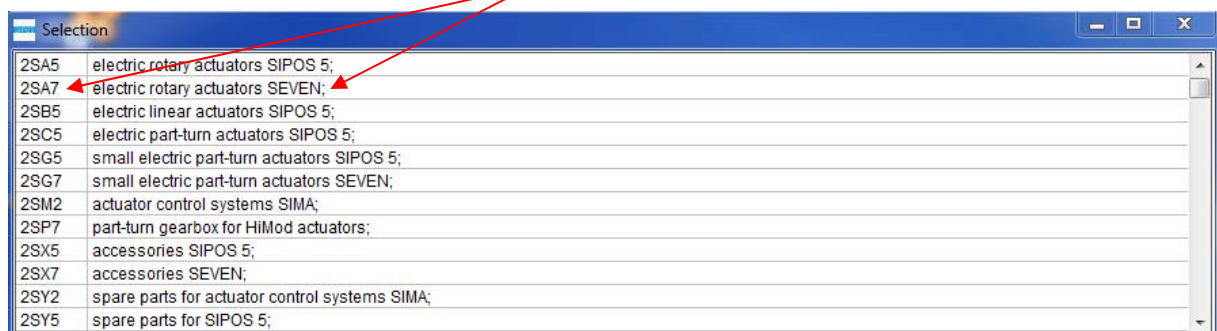
The order number of the product can be entered directly or can be created by following the commands in the menu. A technical plausibility check sophisticatedly stored in the program prevents combinations of data which are technically not possible. The language of the templates and the product description can be set in drop-down lists; a re-start of the program or re-entry of the order number after the language was changed is therefore not required.

2. Start template



3. Selection

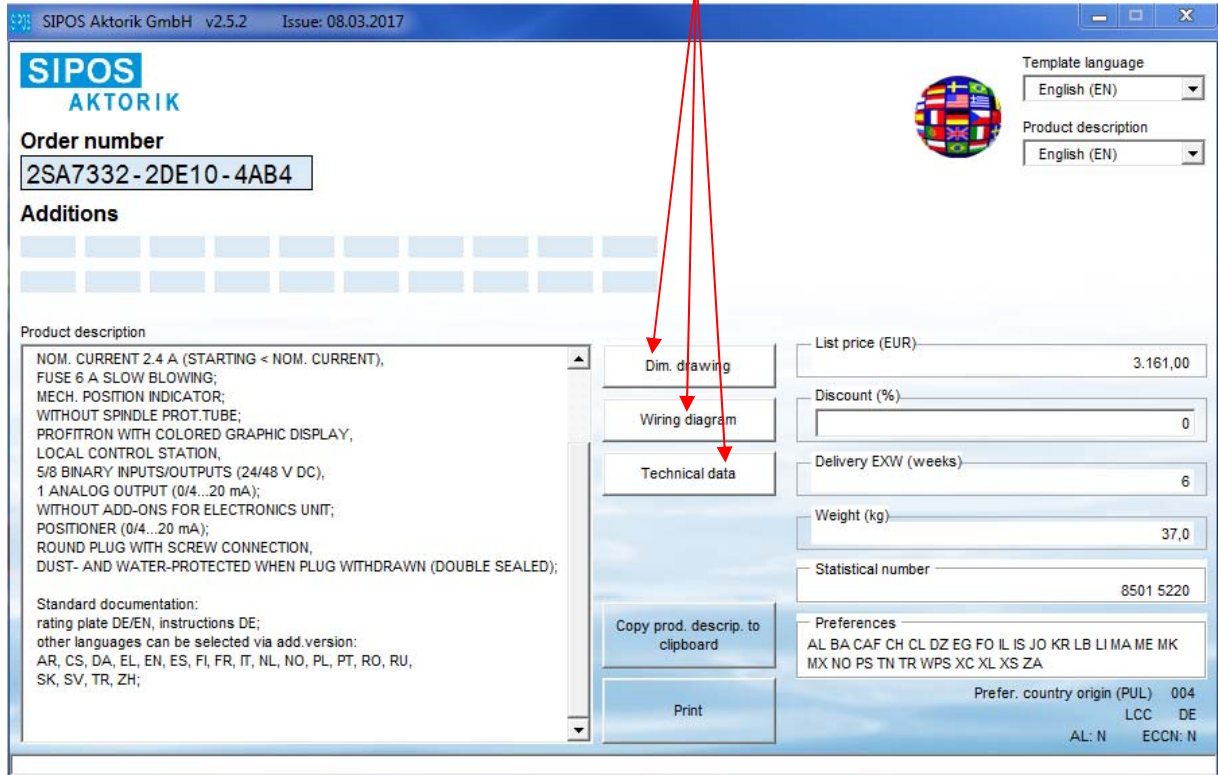
The selection is partly qualified, i.e. you may select the desired product step by step, by requesting technical data, without any prior knowledge on our product range. A selection window opens automatically, providing those options which are technically feasible. The user can either enter the order number in the template **themselves** or copy the data to the mask by **clicking** the desired option in the selection window.



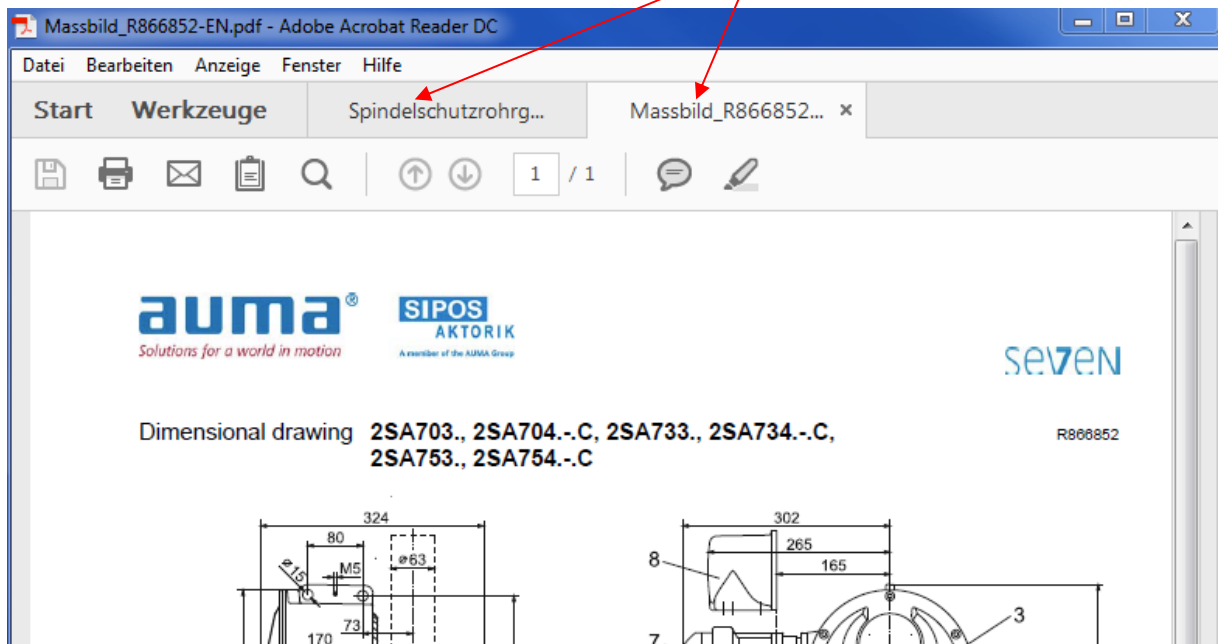
After the selection, the selection window closes and will open again after 2.5 seconds reserved for checks and calculations (may be changed in the “StanUni.ini” configuration settings file) for the next selection(s).

4. Documentation, e.g. dimensional drawing

After completing an order number, the respective dimensional drawing, wiring diagram and the technical data for the selected product are provided by means of the **lit up buttons**.



Click one of these buttons to upload the PDF file in the Acrobat Reader® / Adobe Acrobat. In case there are several files, they are displayed side by side. The PDF file which was uploaded first will be displayed as full window. Possible other PDF files will only become visible after clicking on the file in the tab.



5. Commercial data, delivery time and weight

Even commercial data such as **Custom tariff code** (Statistical number) are displayed after the product has been selected.

Dim. drawing
Wiring diagram
Technical data

List price (EUR) 2.137,80
Discount (%) 0
Delivery EXW (weeks) 12
Weight (kg) 16,0
Statistical number 8501 5100

Copy prod. descrip. to clipboard
Print

Preferences
AL BA CAF CH CL DZ EG FO IL IS JO KR LB LI MA ME MK
MX NO PS TN TR WPS XC XL XS ZA
Prefer. country origin (PUL) 004
LCC DE
AL: N ECCN: N

In addition, both **delivery time** and **weight** will be indicated.

6. Language selection

The menu /template language as well as the product description language **may be individually selected in the drop-down list**. Currently, you can choose between 15 European languages for the menu/ template language and between 11 European languages for the product description. Apart from symbol-based languages, menu/ template language and product description language can be expanded by as many languages as you like.

When starting the program, the default language stored in your Windows operating system will automatically be selected i.e. in case of a Spanish Windows operating system, Spanish will automatically be selected as menu/ template and product description language.

Template language
English (EN)
Deutsch (DE)
English (EN)
Français (FR)
Español (ES)
Italiano (IT)
Русский (RU)
Polski (PL)
Svenska (SV)

Idioma plantilla
Español (ES)
Español (ES)
Italiano (IT)
Русский (RU)
Polski (PL)
Svenska (SV)
Czech (CS)
Türkçe (TR)
Dansk (DA)

7. Processing of obtained data

Click the „Copy prod. descrip. to clipboard“ button to copy all data relevant for the order to the clipboard and then - using the "Paste" command - to any Windows compatible program (Word, Excel, but also Corel Draw or Power Point).



You can make the selection in the language of your country and then after completion - before saving the data to a buffer and pasting them to your document – change over to the menu/template language and product description language of your customer!

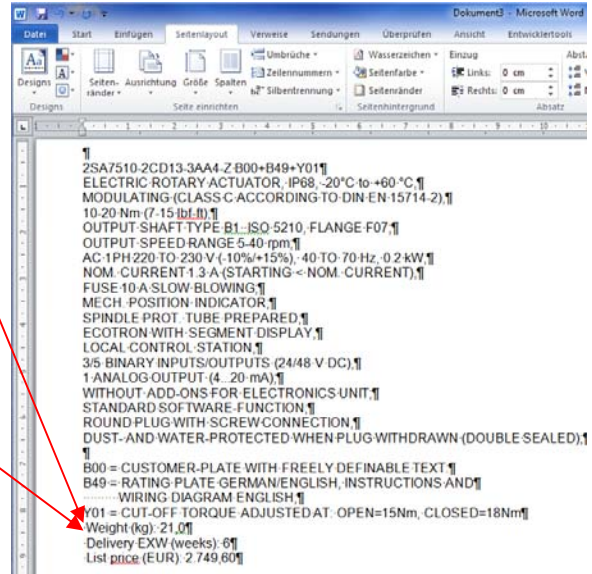
2SA7510-2CD13-3AA4 -Z

Additions
B00 B49

Product description
ELECTRIC ROTARY ACTUATOR, IP68, -20°C to +60 °C, MODULATING (CLASS C ACCORDING TO DIN EN 15714-2), 10-20 Nm (7-15 lbf-ft);
OUTPUT SHAFT TYPE B1 ISO 5210, FLANGE F07;
OUTPUT SPEED RANGE 5-40 rpm;
AC 1PH 220 TO 230 V (-10%/+15%), 40 TO 70 Hz, 0.2 kW, NOM. CURRENT 1.3 A (STARTING < NOM. CURRENT), FUSE 10 A SLOW BLOWING;
MECH. POSITION INDICATOR;
SPINDLE PROT. TUBE PREPARED;
ECOTRON WITH SEGMENT DISPLAY,
LOCAL CONTROL STATION,
3/5 BINARY INPUTS/OUTPUTS (24/48 V DC), 1 ANALOG OUTPUT (4...20 mA);
WITHOUT ADD-ONS FOR ELECTRONICS UNIT;
STANDARD SOFTWARE-FUNCTION;
ROUND P116 WITH SCREW CONNECTION

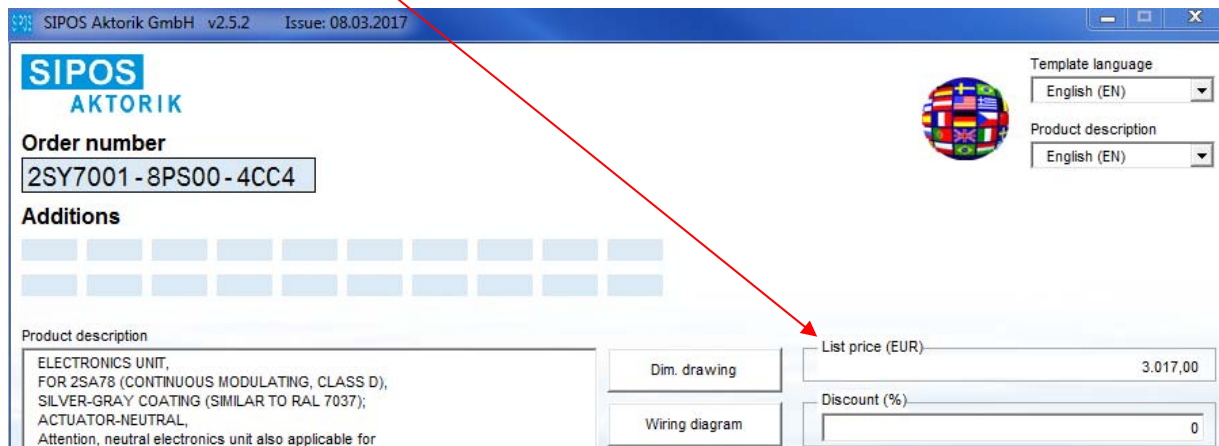
Dim. drawing
Wiring diagram
Technical data
Copy prod. descrip. to clipboard

When saving the data to a buffer memory and copying them to a Windows program, you will automatically receive information on the **weight** and **delivery date**.



8. List and customer price

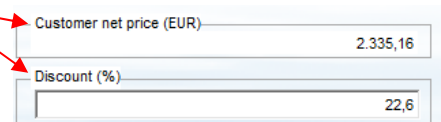
This function is only available when using an installation USB stick "with price quotation".
As a standard, the respective **list price** is displayed after selecting a product (full order number).



When entering a discount in % in the „Discount“ input field, the indication of the upper field changes from „List price“ to „Customer net price“.

The **Customer net price** is determined as follows:

$$\text{Customer net price} = \text{List price} - 0,(\text{Discount}) \times \text{List price}.$$



9. Installation and program start

The installation of this program is very easy: Insert the USB stick and follow the instructions on the screen. As a rule, any request can be confirmed by clicking "Next".

Normally, the installation program runs automatically. Under certain circumstances, the installation cannot be run automatically. In this case, start the installation manually by double-clicking on "**TrustedInstaller.exe**".



Admin rights must be available during the entire installation process!

Name	Größe	Typ
Data		Dateiordner
PDF		Dateiordner
PNG		Dateiordner
Temp		Dateiordner
Product-Selection.exe	2.340 KB	Anwendung
StanUni.ini	20 KB	Konfigurationseinstellungen
TrustedInstaller.exe	4.203 KB	Anwendung

After the installation has been completed, start the "Product selection" program by double-clicking „**Product-Selection.exe**“!

A desktop link is recommended.

You can also start the program via "Start/ All Programs/Product-Selection".

If not set otherwise, the program is installed to the following folder:

C:\Program Files (x86)\Product-Selection.



From version 2.5.0, updates can only be performed as new installation „TrustedInstaller.exe“!
Partial copy and paste of some *.csv-files, does no longer work.